

# **LONGTON PARISH COUNCIL NEWSLETTER**

**SPRING 2018**



## **PARISH COUNCIL PRECEPT 2018/2019**

The Parish Council is pleased to be able to confirm that it has set its Precept for 2018/2019 at the same level as the previous year. It has made budget provision to continue with the Lengthsman Scheme which enables low level enhanced services to be delivered by Peter, who many of you will have seen around the villages undertaking various cleaning and tidying duties. It is expected that the Christmas Competitions and Summer Garden competitions will continue. The Council will continue to act as the Trustee for Longton Victory Memorial Recreation Ground supporting the users wherever it can in developing the great local facilities that exist there. The Council has also confirmed that it will maintain the subsidy to Preston Bus which means that bus service 12 will continue for at least the next twelve months.

At the present time the Council have in reserve £17,000 which they have received under the Community Infrastructure Levy. These funds are given to Parish Councils when housing developments, of a certain size, are commenced in their area. These funds are designed to be used mainly for infrastructure projects which meet the needs of the local community and must not be used for day to day revenue expenditure. The Parish Council would be interested to know what projects might be suitable for the use of these funds either in the Longton or New Longton areas. If you have any suggestions please get in touch so that we may consider your ideas.

The Parish Council will also continue the important work of looking at planning applications in its area and where appropriate making representations as to the suitability or otherwise of proposed developments. It should be noted that SRBC have the final say on planning matters. Your Parish Council can ensure that pertinent points are raised for consideration, provided of course that those points are planning matters.

## **CHRISTMAS COMPETITION AWARDS 2017**

---

**Shop Display - Winner**

Laura Jaynes Longton

**Shop Display - Commendation**

Longton Home and Garden Longton

**House Display - Longton - Winner**

Mr & Mrs Eastham, 31 Shirley Lane, Longton

**House Display - Longton - Commendation**

Mr & Mrs Parker, 128 Liverpool Road, Longton

**House Display - New Longton - Winner**

Mr & Mrs Airey, North View, Startley Nook, New Longton

**House Display - New Longton - Commendation**

Mr & Mrs Murray, 3 Orchard Avenue, New Longton

## **BEST KEPT GARDEN COMPETITION 2018**

---



This year will once again see the Parish Council sponsor the above competition. The competition is automatically open to ALL residents without the need to complete an application form. Members of the Parish Council will be viewing gardens during late June and early July with a view to selecting the best kept gardens in both Longton and New Longton. Why not do that little bit extra and see if you can win one of the garden voucher prizes that are awarded by the Parish Council and presented at the:

**New Longton Flower Show event on Saturday 1st  
September 2018**

The Annual Flower and Handcraft Show will be held at the New Longton Village Hall on Saturday 1st September 2018 and promises to be another great event. Everyone is welcome and new entrants especially children are particularly welcome. This is the opportunity to show your skills in growing plants/flowers, making cakes, painting, crafts, baking and photography. You can also enjoy a cup of tea with homemade cakes.

## **LONGTON OPEN GARDENS SUNDAY 8TH JULY 2018**

---

Interesting gardens - large or small - are sought for this year's event. Gardens are open from 1.00pm to 5.30pm. Now in its 19th year, the scheme raises money for overseas development charities - Friends of Mulanje Orphans, Jireh Women empowering women and helping orphans in India and Zambia, Nyumbani Hospice for orphans in Kenya and Christian Aid famine relief and childcare projects in Africa. The day includes light lunches served in the WI Hall in School Lane (noon to 1.30pm) and an art exhibition in St Andrew's Church Hall by members of Hutton Art Group. Entry to gardens is by a £5 programme, children admitted free. For more information on the scheme contact Cath Greenlees on 613500 or Liz Henfield on lizziehen155@hotmail.co.uk.

# Walton

GARDENS

**SALES OFFICE NOW OPEN**  
THU, FRI, SAT SUN & MON 11AM - 5PM

**SAT NAV PR4 5SN**

A stunning new development of **2, 3 & 4 bedroom homes** and **3 bedroom dormer bungalows** in the village of **Hutton** near Preston.

**FIRST PLOTS NOW RELEASED - 4 BEDROOM HOMES FROM £320,000**



**Located directly opposite Hutton Grammar School these superb new homes at Walton Gardens will offer spacious beautifully appointed accommodation featuring the best in contemporary style and comfort.**

Every home will offer quality ergonomically designed kitchens incorporating a range of built in appliances as well as designer bathrooms and en-suites. A traditional exterior design together with 21st century interior comforts combine to make this fantastic new homes the ideal place for modern family living.

**CALL CHERYL ON 01772 613364 OR HEAD OFFICE SALES ON 01772 229590**



applethwaite

PART OF THE  
**ERIC WRIGHT**  
GROUP

[www.applethwaite-homes.co.uk](http://www.applethwaite-homes.co.uk)



# SOFTLY FURNISHED LTD

BY PAMELA GREENWOOD

*visit our new showrooms  
at*

302 Chapel Lane, New Longton PR4 4AB

Telephone: 01772 617674

Email: [softlyfurnished@aol.com](mailto:softlyfurnished@aol.com)

[www.softlyfurnished.co.uk](http://www.softlyfurnished.co.uk)

# Blundell's Hardware

...open more hours!

*Come in We're Now*  
**OPEN**  
*Sundays*

Mon - Sat

9:00am - 5:30pm

**Sunday**

(& Bank Holidays)

10:30am - 4:00pm

155-161 Liverpool Rd, Longton PR4 5AB  
01772 612365



GREAT BRITISH FOOD  
CASK ALE

GIN

LARGE TERRACE  
SPECIAL EVENTS  
DOG FRIENDLY

150 LIVERPOOL ROAD,

LONGTON PR4 5AU

01772 613 527

[WWW.GOLDEN-BALL.CO.UK](http://WWW.GOLDEN-BALL.CO.UK)



**LONGTON**  
**VILLAGE MARKET**  
*St Andrew's Church Hall*

*Liverpool Road,  
Longton, PR4 5AA*

*First Friday of the month  
9am - 1pm*

\*\*\*\*\*

**TO BOOK A STALL, CONTACT REBECCA HEAP**  
**T: 01772 625276 E: [rheap@southribble.gov.uk](mailto:rheap@southribble.gov.uk)**



## LAWRENCEROONEY ESTATE AGENTS

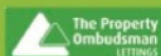
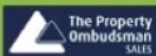
"WHETHER BUYING OR SELLING, LETTING OR  
RENTING OUR SERVICE GETS EXCELLENT RESULTS"

[info@lawrencerooney.co.uk](mailto:info@lawrencerooney.co.uk)

78 Liverpool Road, Longton, Preston, PR4 5PB

**01772 614433**

[WWW.LAWRENCEROONEY.CO.UK](http://WWW.LAWRENCEROONEY.CO.UK)



# WELCOME CAFÉ LONGTON

## Our Dementia Friendly Monthly Café



Each month we invite you to join us at St Andrew's Church Longton for our 'Welcome Café' which meets on the first Friday of every month from 10.00am until 12.30pm at the back of the church on Liverpool Road, so please just drop in anytime.

Everyone is welcome - individuals, groups, anyone who feels isolated, people living with dementia or suffering from memory loss and of course their carers. It is a great chance to meet others in a friendly environment. We enjoy looking at old pictures, playing games and even just chatting about things we used to do.

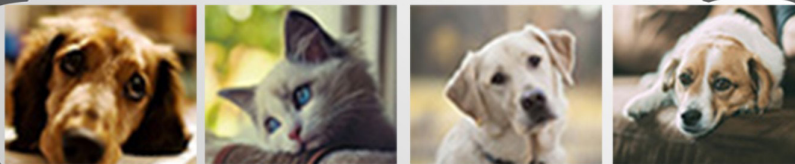
Why not come along and have a chat with us over a cup of tea and a biscuit?

Across from the Church in the Church Hall is Longton Village Market open from 9.00am until 1.00pm. This also takes place on the first Friday of each month. There are lots of stalls with many items having been produced locally.

### So why not come along to both?

Call in on one of our Fridays, or for more information contact Louise Davies on 01772 625354 or e-mail: [ldavies@southribble.gov.uk](mailto:ldavies@southribble.gov.uk)

## WHO WILL LOOK AFTER US?



## If anything should happen to you!

**special requests fulfilled at: [www.funeralplanning.help](http://www.funeralplanning.help)**

There comes a time when we need to think about the day when we're no longer around. However, more and more people are now realising that planning - and paying for - their funeral arrangements in advance makes perfect sense. Not only is it good financial planning, it is also one of the most thoughtful acts you can do to help those close to you cope with bereavement.

**Get a low FIXED price today with your local funeral director.**



**VISIT: [www.funeralplanning.help](http://www.funeralplanning.help) and request your free brochure now, together with answers to all of the above, plus more. Or phone your local authorised agent on: 01772 614608.**







Longton Health Centre and Longton Library in conjunction with Heartbeat raised funds for 2 external defibrillators at their Health Mela in July last year. The first unit is placed on St Andrews Church Hall Longton and with the help of the Black Bull Quiz Team in Longton and South Ribble Rotary Club the second unit will soon be placed around the Black Bull area of Longton.

## What is a defibrillator for?

The defibrillator is a portable device that can be used by a member of the public to help restart the heart when someone has a cardiac arrest. This is when the heart stops pumping blood around the body and they lose consciousness almost at once. For every minute that passes without defibrillation and CPR, chances of survival decrease by around ten per cent. So it's really important the people of Longton know both of these vital steps to help someone in an emergency.

## What are the procedures for using the defibrillator?



Always call 999 from your phone or a mobile and follow the instructions from your local ambulance service. They will provide directions to the nearest device and the code to open the cabinet securing the device. The ambulance operator will stay on the phone with you until the ambulance arrives, providing instructions and support whilst you apply the device to the patient.

**[www.longtonparishcouncil.org](http://www.longtonparishcouncil.org)**  
**[longtonparishcouncil@hotmail.co.uk](mailto:longtonparishcouncil@hotmail.co.uk)**

## YOUR PARISH COUNCILLORS

Donald Alsop	8 Royalty Lane New Longton Preston PR4 4JD	613728
Phil Artis	128 Marsh Lane Longton Preston PR4 5YL	617078
Susan Fox	33 Dale Avenue Longton Preston PR4 5YJ	07583 058313
Joan Wignall	'Woodlands' Long Moss Lane New Longton Preston PR4 4XN	613269
Geoff Welch	3 Oak Grove New Longton Preston PR4 4XT	617791
Graham Gooch	57 Shirley Lane Longton Preston PR4 5WJ	614974
Bill Coulton	14 Boundary Close New Longton Preston PR4 4BD	619279
Karl Turner	35 Landsmoor Drive Longton Preston PR4 5PE	07516 427142
Ann Mather	Pear-tree Farm 247 Chapel Lane New Longton Preston PR4 4AD	614608
Gill Garside	126 Chapel Lane Longton Preston PR4 5FB	617742
Stuart Barnes	57 Back Lane Longton Preston PR4 5BE	611095
Jane Riley	12 The Vinery, New Longton, Preston PR4 4YB	619030

## LONGTON FILM SOCIETY



Re-launched last Autumn in association with the British Film Industry and showcasing their new state of the art equipment, Longton Film Society has already presented a series of award winning films throughout the winter season. Building on that success they are planning to include matinees for children during the summer holidays and a season of British classics.

Longton VM's modern and relaxing lounge offers an intimate setting, friendly atmosphere and well stocked free house bar. The entrance fee of £5 can be paid on the night or online at **[www.longtonvm.co.uk](http://www.longtonvm.co.uk)** box office. Come along for a great night out on your doorstep.

The next scheduled films are **The Greatest Showman** (singalong version), **Three Billboards Outside Ebbing Missouri** and **The Darkest Hour**. Check the web site for details and times **[www.longtonvm.co.uk](http://www.longtonvm.co.uk)** and choose the Box Office Tab.

## CLERK AND RESPONSIBLE FINANCIAL OFFICER

**W V MCENNERNEY-WHITTLE**

7 BILSBOROUGH MEADOW PRESTON PR2 1YY

**TEL:** 01772 733829

**E-MAIL:** [longtonparishcouncil@hotmail.co.uk](mailto:longtonparishcouncil@hotmail.co.uk)

**WEB SITE:** [www.longtonparishcouncil.org](http://www.longtonparishcouncil.org)

## DATES AND VENUES OF FORTHCOMING MEETINGS

Parish Council Meetings are normally held on the first Tuesday of each month (exc January & August) commencing at 7.30pm (an adjournment is provided in order that the council may listen to representations from the public)

### DATES AND VENUES OF FORTHCOMING MEETINGS

**5th JUNE 2018 @ NEW LONGTON VILLAGE HALL**

**3rd JULY 2018 @ LONGTON LIBRARY**

**4th SEPTEMBER 2018 @ NEW LONGTON VILLAGE HALL**